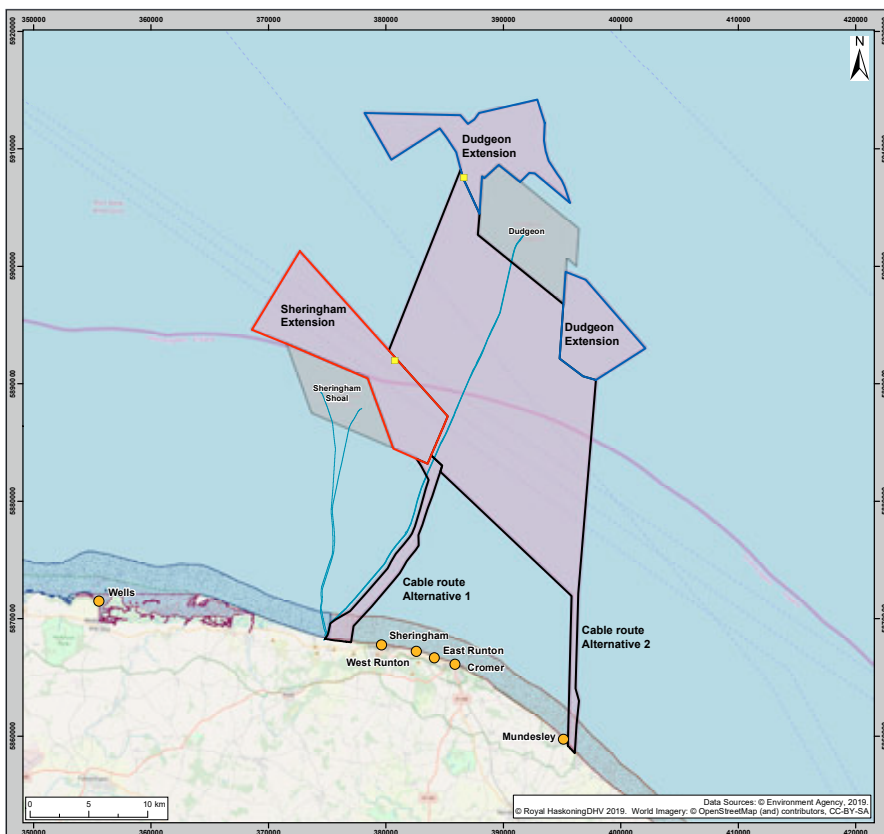


Equinor announces Sheringham Shoal extension



intends to look at both separate and common development opportunities.

It is planned that both extensions will utilise a joint set of transmission assets including an offshore substation to be located in the Sheringham Shoal wind farm site, all offshore and onshore cables and an onshore substation.

Equinor has accepted an offer from the National Grid of a grid connection point at its Norwich Main substation south of Norwich. The seabed export cable bringing the power generated by the additional wind turbine generators will make landfall either at Weybourne or Bacton on the Norfolk coast, from where an underground onshore cable will be installed to the site of a new onshore substation close to Norwich Main.

The Sheringham Shoal Power Plant Manager Karl Butler said:

“This is a very exciting development opportunity to further meet the UK’s energy needs and ambitions for a low carbon future. In addition, the project will create a large number of local career opportunities within the renewable industry, and I believe it reflects Sheringham Shoal’s success since it was fully commissioned in 2012.

“As the operator of both offshore wind farms, Equinor will be undertaking wide stakeholder and community consultation before submitting its planning application to the Planning Inspectorate” ●

Having entered into Agreements for Lease with the Crown Estate, Equinor has announced that it is seeking planning consent to increase the generating capacity of both the Sheringham Shoal and Dudgeon Offshore Wind Farms.

The Sheringham Shoal extension will involve the erection of at least an additional 27 wind turbine generators to the north and east of the existing wind farm site, increasing the generating capacity of the wind farm by a further 317MW.

Although the Agreements for Lease provide separate rights for both the Sheringham Shoal and Dudgeon Offshore Wind Farms to develop its own extension, Equinor

Contents

2 - Mental health first aid
- Sheringham Shoal people

3 - Local initiatives
- It will soon be ChristmasTide in Wells
- Aprons for the White Lion Café
- Coastwatch in North Norfolk

4 - The Sheringham Shoal Community Fund
- Green irrigation for North Walsham bowling green
- Solar power with battery storage
- First Norfolk eco-gym



● Sheringham Shoal's mental health first aiders

Mental health first aid

With one in four workers likely to suffer a mental health condition during their career, mental health care and welfare is a subject which should be of concern to all businesses, and UK health bodies are encouraging all public and private organisations and businesses to take action to ensure help is at hand in the workplace.

In recent months all the employees and contractors at Sheringham Shoal Offshore Wind Farm have taken part in a Mental Health First Aid Day, and there are now 16 trained mental health first-aiders who can provide vital support in times of

individual personal crisis, as well as offering guidance and advice about the next steps to obtaining care and treatment.

"Health and safety is at the core of everything we do, and mental health welfare is just as important as physical health care," commented Sheringham Shoal Power Plant Manager, Karl Butler.

"Some 80% of Sheringham Shoal employees work for long hours in an isolated environment, and it is important the workplace environment is such that everyone is able to express their feelings and concerns. If one of the team is 'having a bad day' we want them to say so, and not to try and to hide the problem."

"I feel that the mental health care training which has taken place over the last few months has resulted in everybody being more receptive to issues affecting their workplace colleagues" ●

SHERINGHAM SHOAL
Offshore Wind Farm
Operated by Equinor

Educational visits welcome
Contact us for more information

Wind Farm Visitor Centre at The Mo

An educational, interactive and fun exhibition; accessible to everyone, group visits welcome.

- Learn about climate change and renewable energy
- Understand the historic importance of wind energy to North Norfolk
- See the development and construction of the wind farm unfold before you
- Learn about the daily operation and maintenance activities at the wind farm



FREE Exhibition

(Normal entry fees apply when visiting the Sheringham Museum)

2020 opening times to be found at www.sheringhammuseum.co.uk

Sheringham Museum at the Mo, Lifeboat Plain, Sheringham, NR26 8BG
01263 824482 www.sheringhamshoal.co.uk

Sheringham Shoal people – making a difference

Over the last five years, Charlotte Monsey and her family have left their individual comfort zones and taken on personal challenges that have raised over £80,000 for the hospitals that played such an important role in helping her daughter on a tough journey through the early years of her life.



● Charlotte Monsey (right) takes to the boxing ring

This year Charlotte took on yet another challenge, stepping into the boxing ring with Tower Fitness Corporate Boxing to raise funds for the daughter of a colleague at Dudgeon Offshore Wind Farm whose treatment for cancer can only be obtained overseas. 12 weeks of intensive training saw her win her 3-round contest against Danielle Whisken, raising over £1,300 in the process ●

Local initiatives...

Sheringham Shoal is pleased to continue to support a wide range of community events and projects and charitable organisations in their activities in North Norfolk.

Initiative 1

It will soon be Christmas Tide in Wells

The Christmas Tide Festival in Wells-next-the-Sea attracts thousands of visitors who come to see the town's Christmas decorations, be present at the switch on of the Christmas lights and to welcome Father Christmas on his arrival by boat on the harbour quayside.

Although the festivities start on the previous day, Saturday 30 November is the key date for diaries for the 2019 Christmas Tide Festival. There will be lots going on throughout the day, and TV personalities David Whitely and Amelia Reynolds will perform the lights switch on at 5:00pm, whilst Father Christmas is scheduled to arrive on the town quay at 6:30pm.

With its O&M Base at Wind Farm Place, Wells-next-the-Sea is home to the Sheringham Shoal Offshore Wind Farm, which is one of the local businesses supporting this popular North Norfolk event ●



● Christmas Tide festivities in Staithe Street

Initiative 2

Aprons for the White Lion Café

Parkside School based in Norwich is a specialist communication and interaction school that currently supports the needs of 169 pupils drawn from across Norfolk.

It opened the White Lion Café on White Lion Street in Norwich as a not-for-profit business in order to provide experience and skills for young people with complex educational needs, helping to ease them into the world of work and adult life.

When the White Lion Café was rebranded earlier this year, a donation from the Sheringham Shoal Offshore Wind Farm funded the purchase of new catering aprons sporting the Café's eye-catching new logo ●



● Karl Butler, Sheringham Shoal Power Plant Manager (3rd from left), visiting the White Lion Café

Initiative 3

Coastwatch in North Norfolk

Exciting projects are underway at two lookout stations operated by the National Coastwatch Institution (NCI) on the North Norfolk coast.

NCI Wells-next-the-Sea has recently been granted planning permission by North Norfolk District Council to construct a new larger lookout station, and a fund raising campaign to raise the £100,000 needed for this project is now underway. The station is maintained by 62 volunteers working on a rota basis, and the expanded station will enable them to keep watch, train others and welcome visitors at the same time; currently all three activities have to be juggled by the same people.

In October last year NCI Runton, whose station is based in East Runton near Cromer, changed its name to NCI Cromer. The NCI Trustees felt that this reflected the area's 'national importance' and would be a more easily recognised location to mariners and holiday visitors alike.

Unfortunately the NCI Cromer station then suffered severe damage in last winter's storms, rendering it unsafe to use. However, it maintained its operations working out of a temporary mobile unit while fundraising, and obtaining planning permission, for a new unit, which was finally delivered and installed on site in late September this year.

The Sheringham Shoal Offshore Wind Farm is pleased to be able to support the work of the volunteers who man the Coastwatch stations along the coast of North Norfolk ●



The Sheringham Shoal Community Fund...

Since its establishment in 2010, the Sheringham Shoal Community Fund has made grant awards totalling £789,030 to various community groups, charities and schools in North Norfolk.

The fund criteria relate to renewable energy, marine environment and safety, sustainability or education in these areas. The Fund is operated by Norfolk Community Foundation, and a panel made up of local representatives from the community, business and education sectors, sits twice a year to consider applications and award grants. Panel meetings are held in May and November.

There have been a number of 'firsts' for the recent grant awards made by the Sheringham Shoal Community Fund, details of which are contained in the following case studies.

Case study 1

North Walsham New Road Bowls and Snooker Club

A grant from the Sheringham Shoal Community fund has enabled the North Walsham New Road Bowls and Snooker Club to install a pop-up automated irrigation system which harvests rainwater to water the Club's bowling green.



● The irrigation system in use

The eco-friendly system features a 10,000 litre rainwater storage tank, the contents of which are used to automatically water the bowling green during the early mornings of days when there has been less than 6mm of rainfall in the previous 24 hours.

Bowls Captain Bryan Sadler is delighted with the new system, saying: *"The Club has around 116 members and is run entirely by volunteers. As well as making the lives of us green keepers so much easier, particularly during periods of hot weather such as have been experienced recently, we are expecting this irrigation system to enable us to significantly reduce the Club's mains water consumption."*

Case study 2

Dilham Village Hall

Although the Sheringham Shoal Community Fund has provided grant support to a number of village halls and community centres across North Norfolk to help with the installation of solar photovoltaic panels, the grant to Dilham Village Hall is a 'first' because the 2.65kWh solar panel system includes a 6.4kWh battery storage capability.

An energy consultant's report was commissioned as part of the research for this innovative system; this indicated that since over 63% of the Hall's annual electricity usage is in the evenings, a system without battery storage would result in the hall drawing electricity from the National Grid for these periods.

Dilham Village Hall Trustee Tony Kirwan has high expectations of the new system, saying: *"I am expecting 3 to 4 hours of sunlight we might get on a normal day to provide sufficient energy for two and a half evenings of village hall use, and I shall be collecting and analysing the performance data automatically collected."*

The batteries have a forecast life of 10 years, and their replacement would cost around £4,000 at today's prices. With estimated electricity savings of around £420 a year, while reducing annual carbon emissions by 1.2 tonnes, the Trustees believe they must use the renewable electricity generated and stored by the solar photovoltaic system to create additional income streams ●



● Ross McMillan (2nd from right) from Sheringham Shoal Offshore Wind Farm being shown the battery storage unit by Dilham Village Hall Trustees

Case study 3

First Norfolk outdoor eco-gym

With the assistance of a grant from the Sheringham Shoal Community Fund, Norfolk's first outdoor eco-gym has opened in the Memorial Park in North Walsham.

With the support of North Walsham Town Council, it has been developed by the charity North Walsham Play (NWP), and is situated adjacent to the Memorial Park children's play area which was also developed by NWP in 2018.

The eco-gym features thirteen pieces of equipment of which four exercise machines enable users to generate electricity to recharge their mobile devices through their pedalling.

Matthew Smith, the founder and a Trustee of North Walsham Play, is delighted with the eco-gym, saying:

"The exercise machines work just like a UK plug socket, so two to three hours of pedalling or pulling across any of the four items of equipment should be sufficient to fully charge a mobile phone."

He continued: *"The installation also features battery storage, so any surplus electricity generated by those using the eco-gym will be stored and used to help reduce the cost of the Memorial Park's overall electricity consumption."*

"In the coming months, NWP will publish the statistics relating to electricity generation by the exercise machines, and I think that will be very interesting data" ●



● The outdoor eco-gym developed by North Walsham Play

Image courtesy of North Walsham Play

Contact details and more information:

Sheringham Shoal is owned by Equinor, Equitix and the Green Investment Group through Scira Offshore Energy Ltd. Equinor is the operator for the Sheringham Shoal Offshore Wind Farm. Scira Offshore Energy Ltd is the legal entity.

Scira Offshore Energy Limited, Wind Farm Place, Edgar Road, Walsingham, Norfolk NR22 6EJ
01328 824370 | info@sheringhamshoal.co.uk | www.sheringhamshoal.co.uk